



NC Carpet Binding & Equipment Corp

Toll Free: (800) 526-1184 Direct: (973) 481-3500

- Precision Machines Built For Life
- Over 1000 Edgings For The Carpet Border
- Same Day Shipping, 24-hr Repair Service

PARTS CATALOG

PORTABLE CARPET BINDER

MODELS PBS-2A, PBT-A

NC Carpet Binding & Equipment Corp.

858 Summer Avenue Newark, NJ 07104

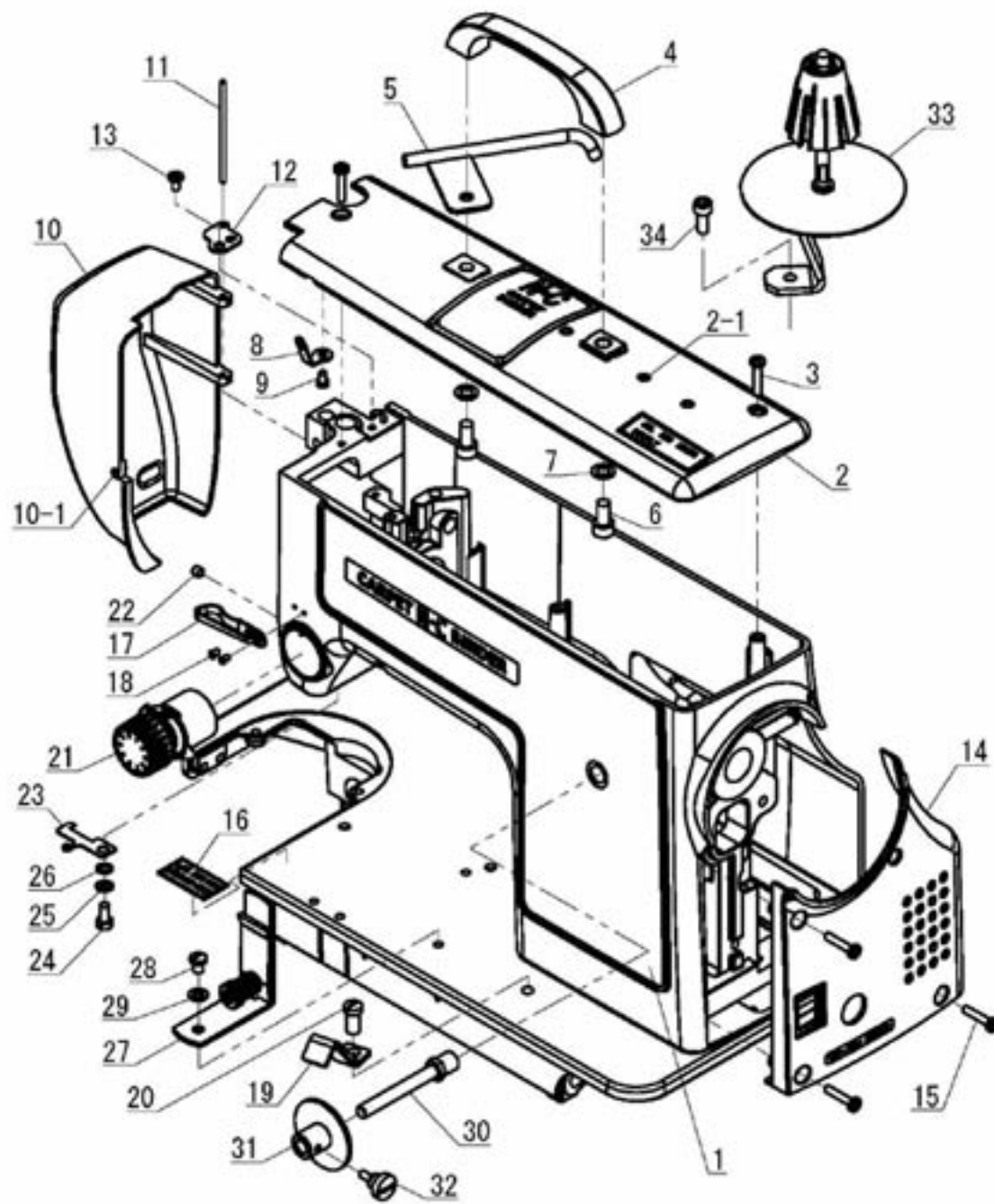
Phone:

Direct US 973-481-3500

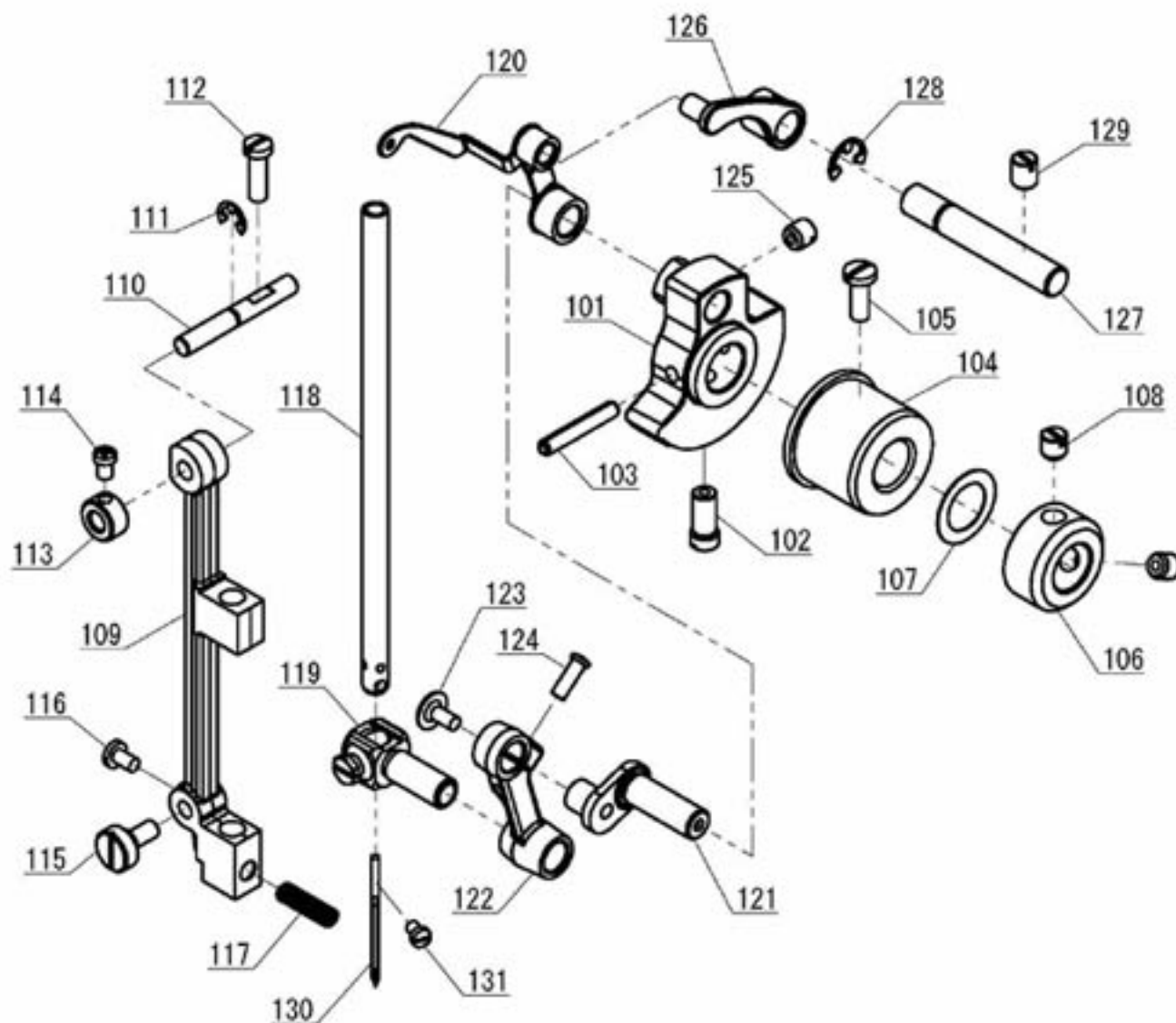
Toll Free Can. 800-336-1184

Phone 973-481-3500

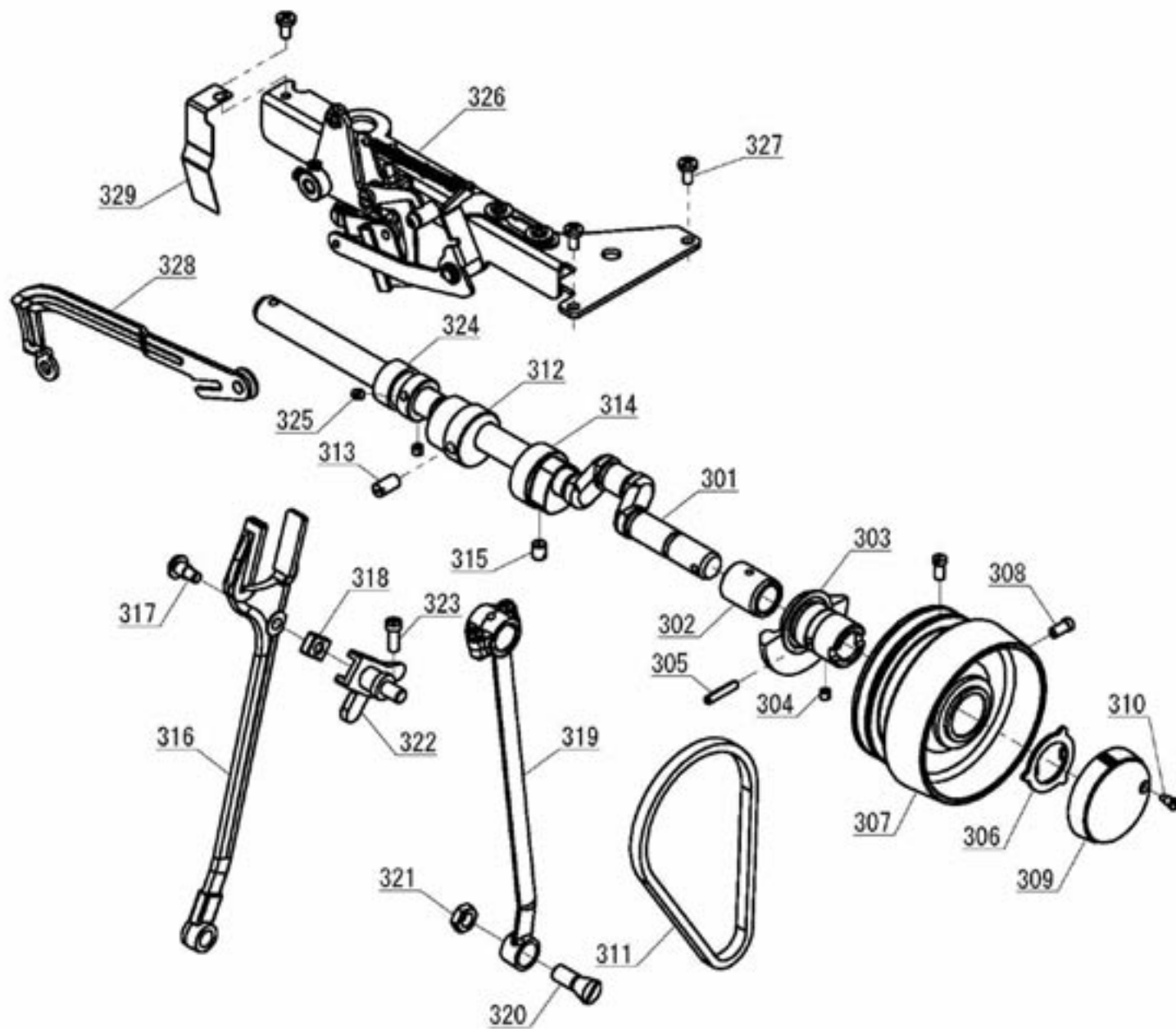
Fax 973-481-0839



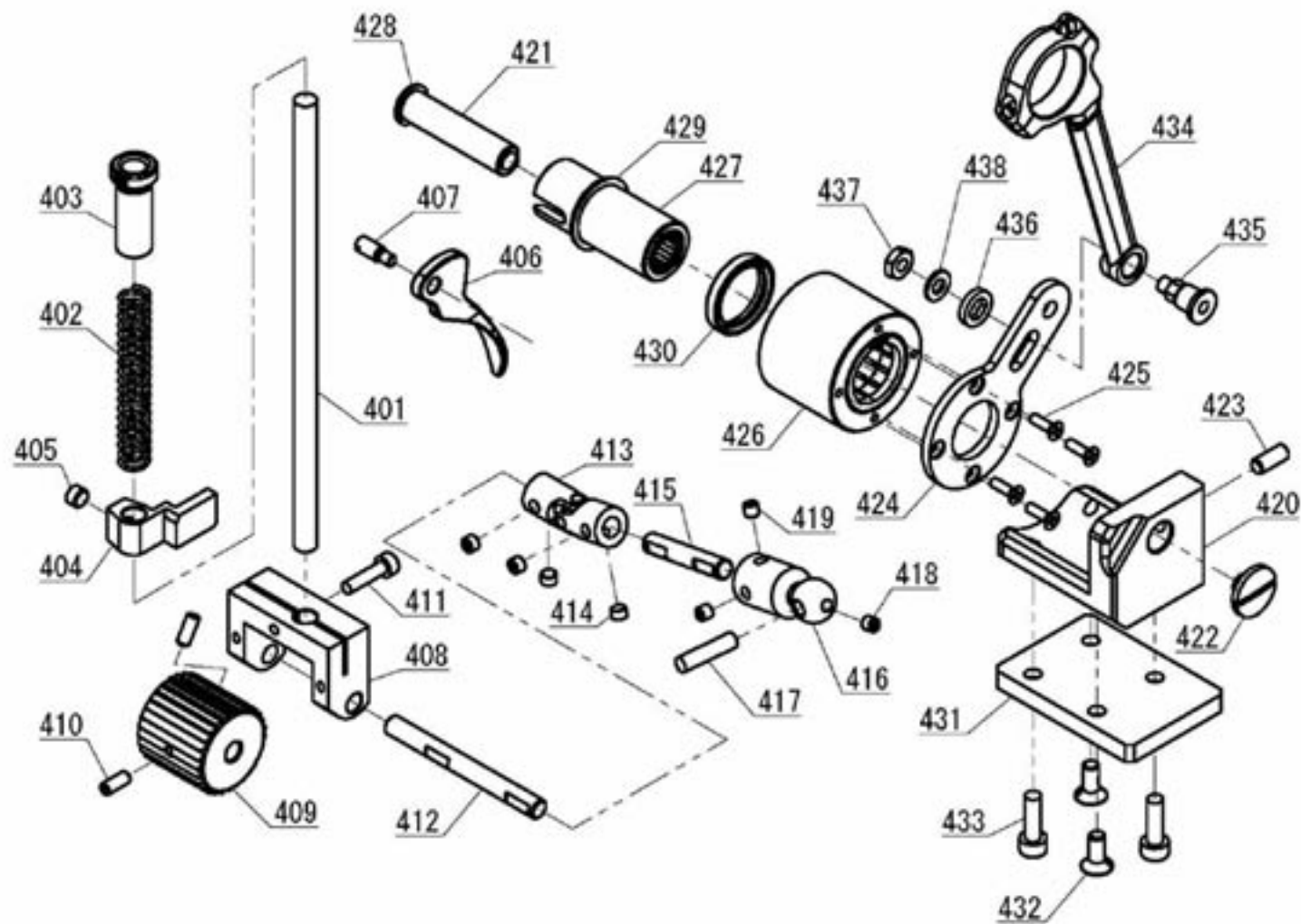
NO.	Name of parts	Qty	NO.	Name of parts	Qty
1	ARM FACE PLATE	1	17	THREAD GUIDE	1
2	TOP PLATE ASSY	1	18	SCREW(CROSS HEAD)	2
2-1	SPRING PIN(5*18)	3	19	TAPE GUIDE B	1
3	SCREW(+/- HEAD)	2	20	SCREW(- HEAD)	1
4	CARRYING HANDLE	1	21	THREAD TENSION ASM.	1
5	THREAD GUIDE TUBE	1	22	SCREW(SET)	1
6	SCREW(CAP)	2	23	THREAD GUIDE	1
7	WASHER(PLAIN)	2	24	SCREW(BOLT)	1
8	THREAD GUIDE	1	25	WASHER(PLAIN)	1
9	SCREW(+/- HEAD)	1	26	WASHER(PLAIN)	1
10	FACE PLATE ASM.	1	27	TAPE GUIDE A ASM.	1
10-1	RETAINING STUD	1	28	SCREW(- HEAD)	1
11	HINGE PIN	1	29	WASHER(PLAIN)	1
12	FACE PLATE HINGE	1	30	TAPE HOLDER SHAFT	1
13	SCREW(+/- HEAD)	1	31	TAPE HOLDER	1
14	BELT COVER ASM.	1	32	SCREW	1
15	SCREW(+/- HEAD)	3	33	SPOOL HOLDER ASM.	1
16	CAUTION NOTE LABEL B	1	34	SCREW(CAP)	1



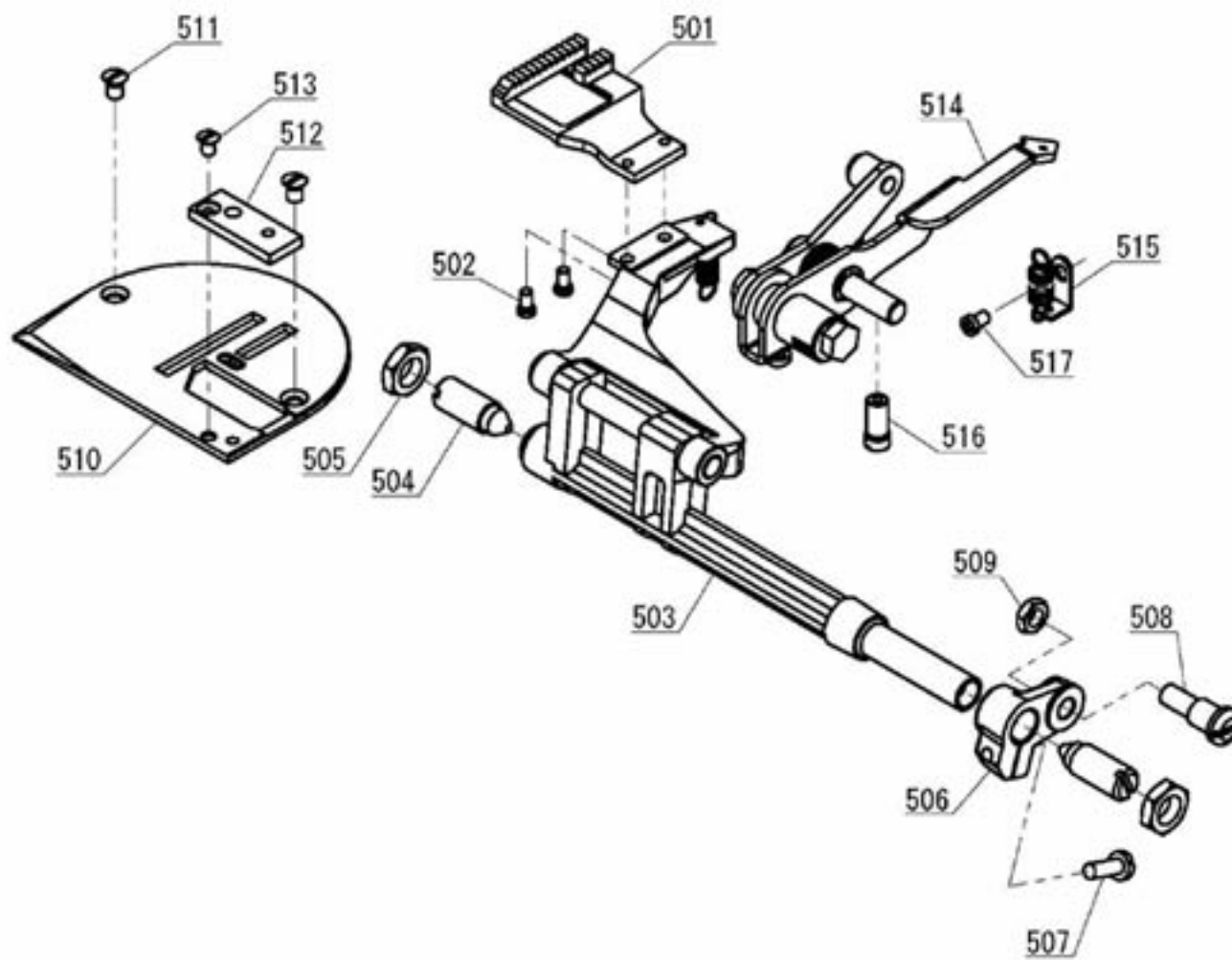
NO.	Name of parts	Qty	NO.	Name of parts	Qty
101	ARM SHAFT CRANK	1	117	SPRING	1
102	SCREW(- HEAD)	1	118	NEEDLE BAR	1
103	SPRING PIN(4*25)	1	119	NEEDLE BAR CONNECTION STUD	1
104	ARM SHAFT BUSHING	1	120	TAKE-UP LEVER	1
105	SCREW(- HEAD)	1	121	TAKE-UP LEVER CRANK	1
106	THRUST COLLAR	1	122	NEEDLE BAR CONNECTING LINK	1
107	SHIM WASHER	1	123	SET SCREW	1
108	SCREW(SET)	2	124	SCREW(- HEAD)	1
109	NEEDLE BAR FRAME	1	125	SCREW(SET)	1
110	NEEDLE BAR FRAME PIN	1	126	CRANK SHAFT SUPRORT	1
111	RETAINING RING E	1	127	TAKE-UP LEVER PIN	1
112	SCREW(- HEAD)	1	128	RETAINING RING E	1
113	THRUST COLLAR	1	129	SCREW(SET)	1
114	SCREW(+/- HEAD)	1	130	NEEDLE	1
115	ADJUSTING SCREW	1	131	SCREW(- HEAD)	1
116	SCREW(+/- HEAD)	1			



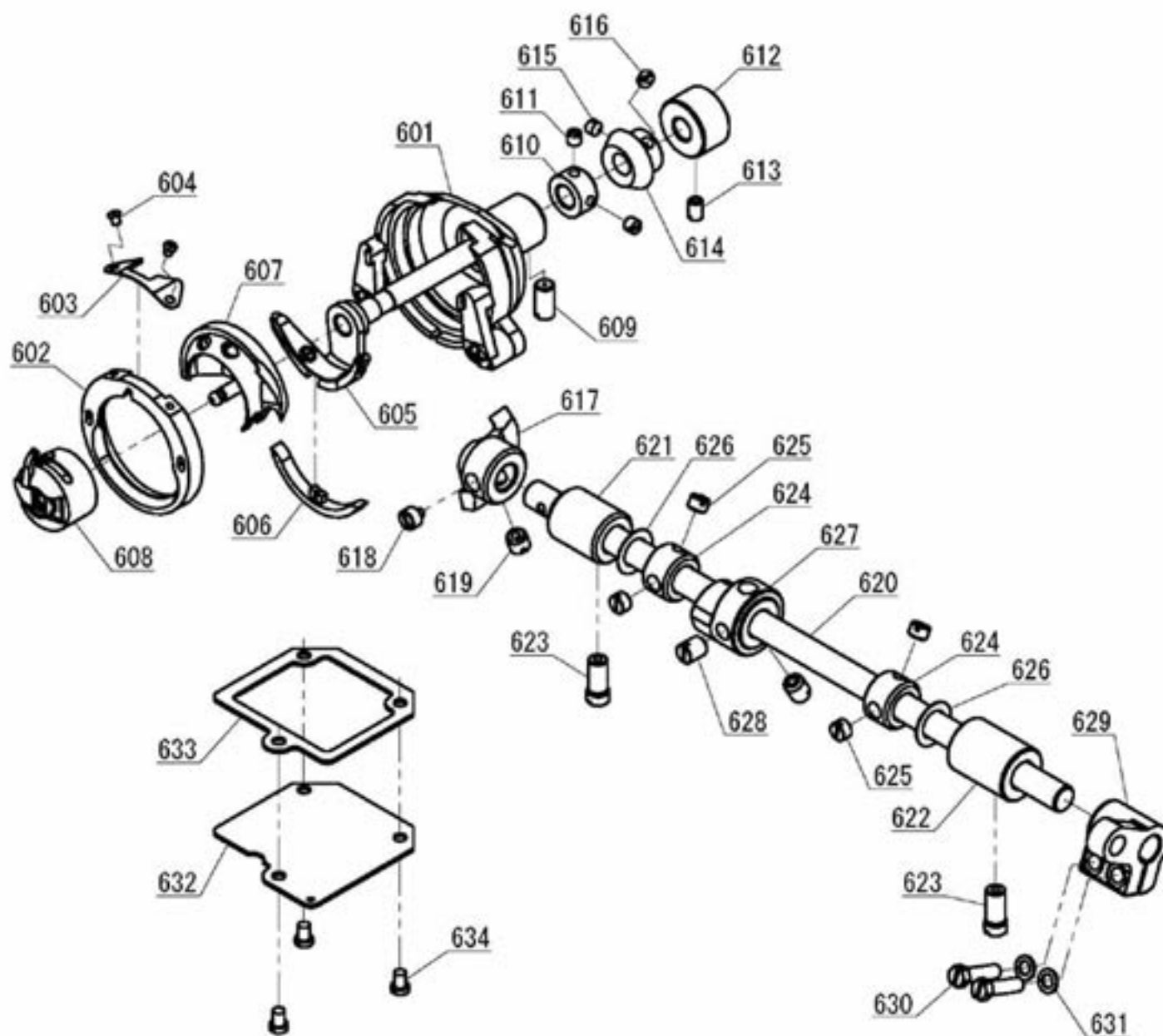
NO.	Name of parts	Qty	NO.	Name of parts	Qty
301	ARM SHAFT	1	316	FORLED ROD	1
302	ARM SHAFT BUSHING	1	317	SLIDE BLOCK SHAFT	1
303	HAND WHEEL BUSHING	1	318	SLIDE BLOCK	1
304	SCREW(SET)	1	319	CRANK ROD	1
305	SPRING PIN(3.5*18)	1	320	HINGE SCREW	1
306	STOP MOTION WASHER	1	321	NUT	1
307	HAND WHEEL	1	322	POSITION BLOCK ASM.	1
308	SCREW(- HEAD)	2	323	SCREW(+ HEAD)	1
309	STOP MOTION SCREW	1	324	WORM GEAR	1
310	SCREW(- HEAD)	1	325	SCREW(SET)	2
311	V-BELT	1	326	UNIT FRAME ASSY	1
312	ECCENTRIC CAM	1	327	SCREW(- HEAD)	3
313	SCREW(SET)	1	328	ZIGZAG DRIVING CRANK ASM.	1
314	FEED CUM	1	329	GUIDE	1
315	SCREW(SET)	1			



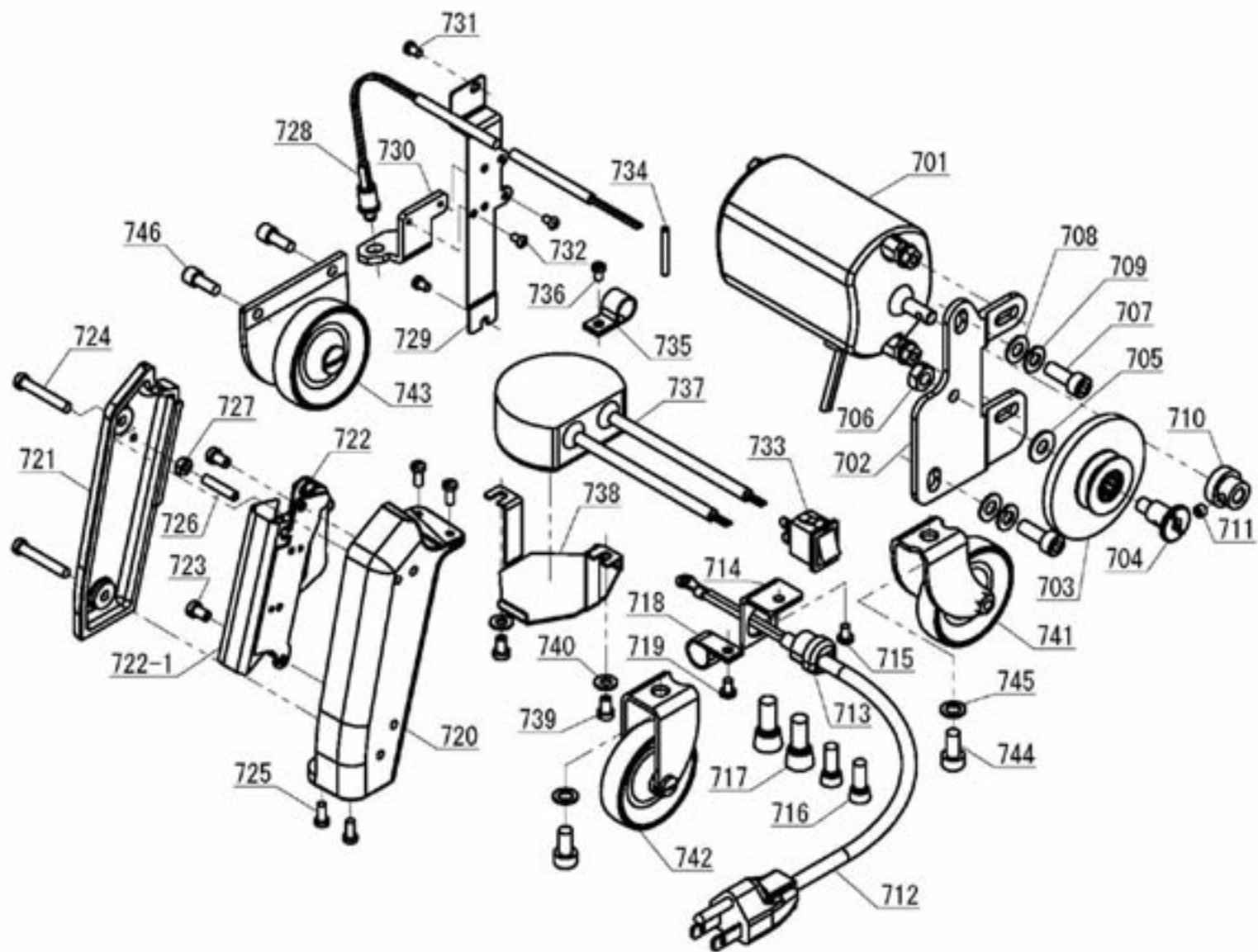
NO.	Name of parts	Qty	NO.	Name of parts	Qty
401	PRESSER BAR	1	421	CLUTCH SHAFT	1
402	PRESSER SPRING	1	422	SCREW(- HEAD)	1
403	PRESSER REGULATOR	1	423	SCREW(SET)	1
404	PRESSER BAR BRACKET	1	424	CLUTCH CONNECTING CRANK	1
405	SCREW(SET)	1	425	SCREW(CROSS HEAD)	4
406	HAND LIFTER	1	426	CLUTCH BASE ASM.	1
407	HAND LIFTER HINGE STUD	1	427	JOINT SHAFT ASM.	1
408	ROLLER BRACKET	1	428	RETAINING RING S	1
409	ROLLER	1	429	RETAINING RING S	1
410	SCREW(SET)	2	430	OIL SEAL	1
411	SCREW(CAP)	1	431	CLUTCH HOLDER BASE	1
412	ROLLER SHAFT	1	432	SCREW(CAP)	2
413	JOINT ASM	1	433	SCREW(CAP)	2
414	SCREW	4	434	CONNECTING ROD	1
415	CONNECTING SHAFT	1	435	HINGE SCREW	1
416	CLUTCH SHAFT CONNECTOR	1	436	WASHER	1
417	JOINT PIN	1	437	NUT	1
418	SCREW(SET)	1	438	WASHER(PLAIN)	1
419	SCREW(SET)	2			
420	CLUTCH HOLDER	1			



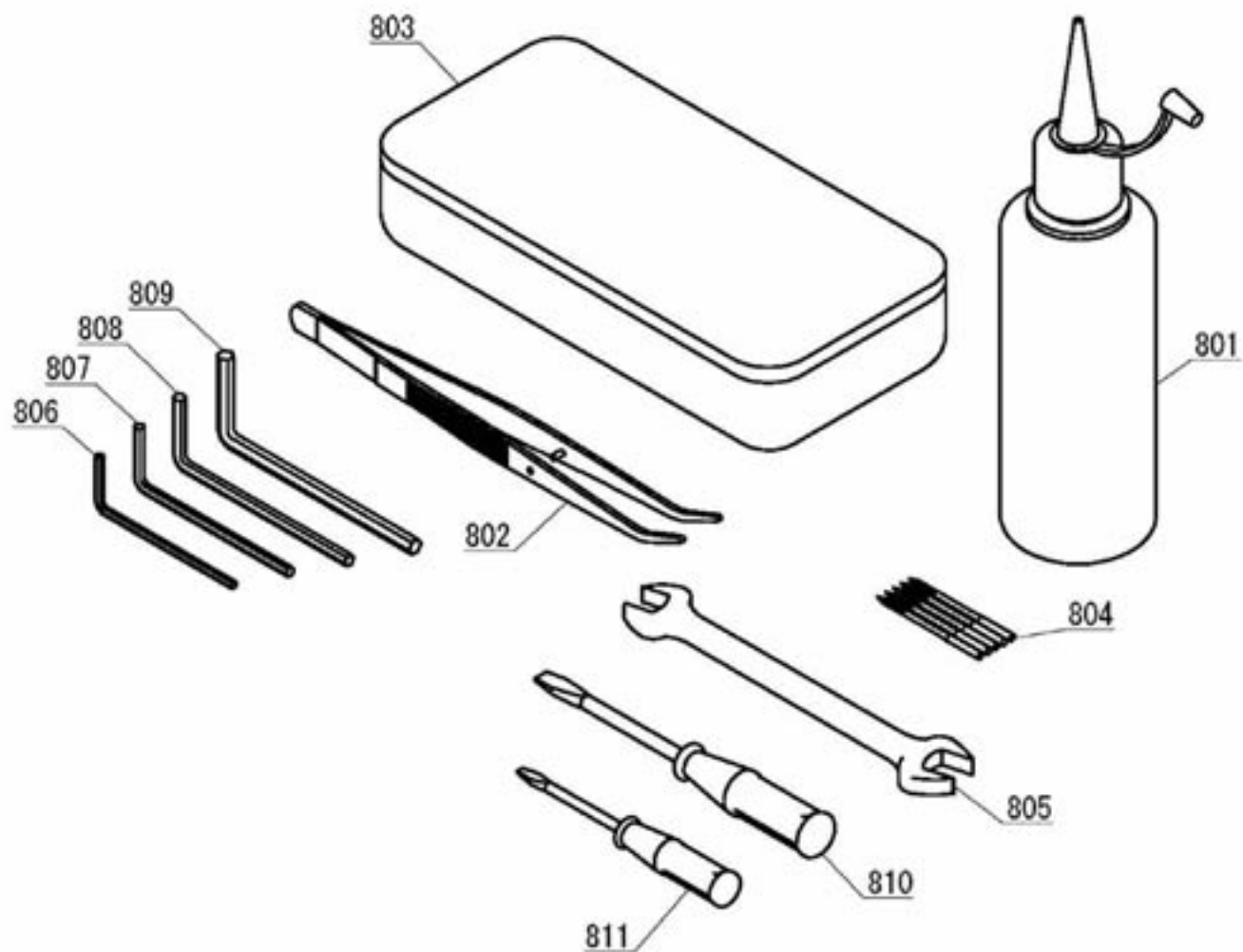
NO.	Name of parts	Qty				
501	FEED DOG	1				
502	SCREW(- HEAD)	2				
503	FEED BASE	1				
504	CENTER SCREW	2				
505	NUT	2				
506	FEED ROCKER SHAFT CRANK	1				
507	SCREW(- HEAD)	1				
508	HINGE SCREW	1				
509	NUT	1				
510	NEEDLE PLATE	1				
511	SCREW(- HEAD)	2				
512	BINDER PLATE	1				
513	SCREW(- HEAD)	1				
514	FEED LIFTING CRANK	1				
515	SPRING	1				
516	SCREW(- HEAD)	1				
517	SCREW(++ HEAD)	1				



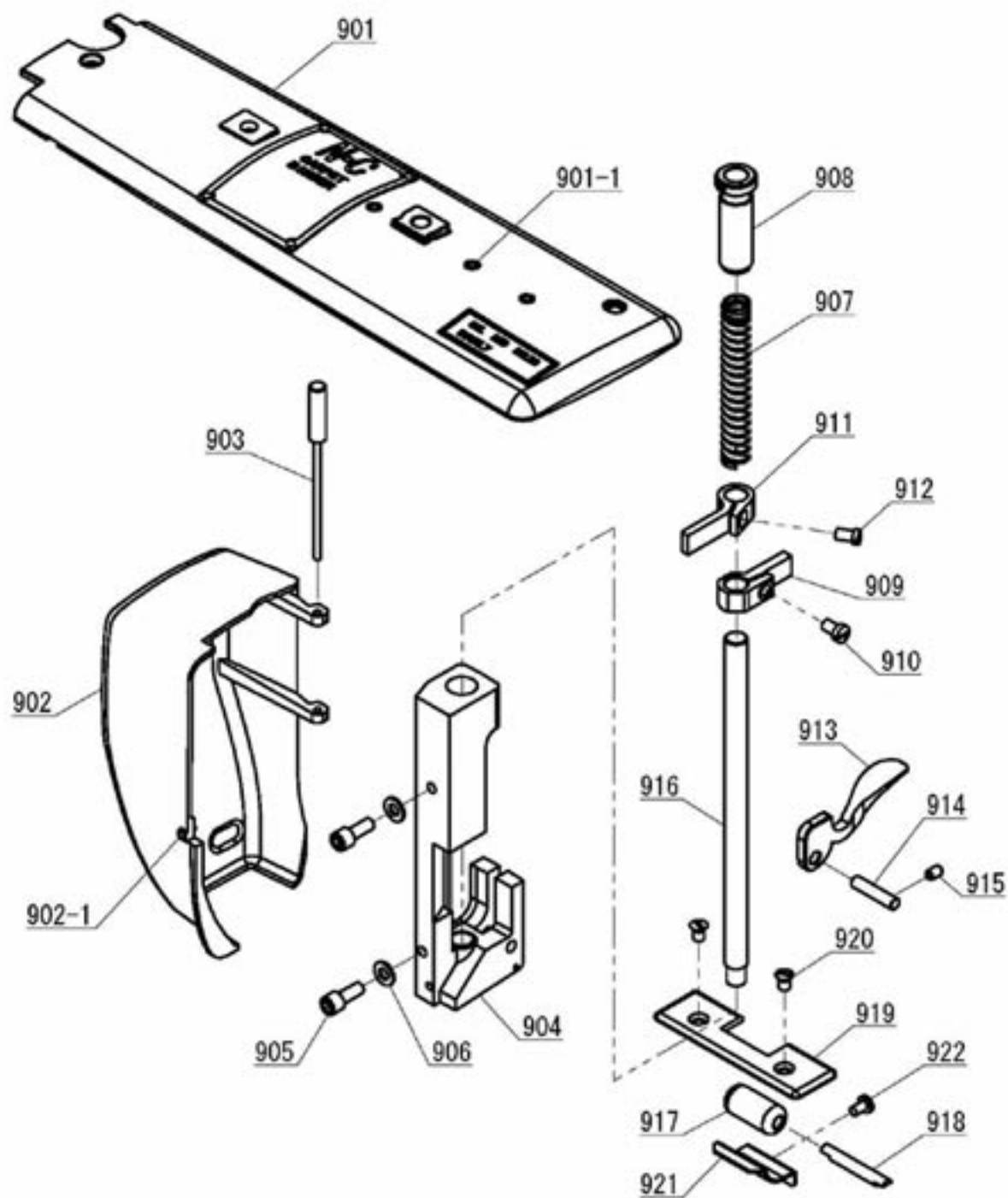
NO.	Name of parts	Qty	NO.	Name of parts	Qty
601	SHUTTLE RACE	1	618	SCREW(SET)	1
602	SHUTTLE RACE RETAINING RING	1	619	SCREW(SET)	1
603	RACE CAP SPRING	1	620	LOWER SHAFT	1
604	RACE CAP SPRING SCREW	2	621	LOWER SHAFT BUSHING	1
605	SHUTTLE DRIVER SHAFT ASM.	1	622	LOWER SHAFT BUSHING	1
606	SHUTTLE CLEANER	1	623	SCREW(- HEAD)	2
607	SHUTTLE HOOK	1	624	THRUST COLLAR	2
608	BOBBIN CASE	1	625	SCREW(SET)	4
609	SCREW(SET)	1	626	SHIM WASHER	2
610	THRUST COLLAR	1	627	LOWER SHAFT CAM	1
611	SCREW(SET)	2	628	SCREW(SET)	2
612	SHUTTLE DRIVER SHAFT BUSHING	1	629	LOWER SHAFT CRANK	1
613	SCREW(SET)	1	630	SCREW(BOLT)	2
614	BEVEL GEAR	1	631	WASHER(PLAIN)	2
615	SCREW(SET)	1	632	GEAR BOX COVER	1
616	SCREW(SET)	1	633	GEAR BOX COVER PAKING	1
617	BEVEL GEAR	1	634	SCREW(+/- HEAD)	3



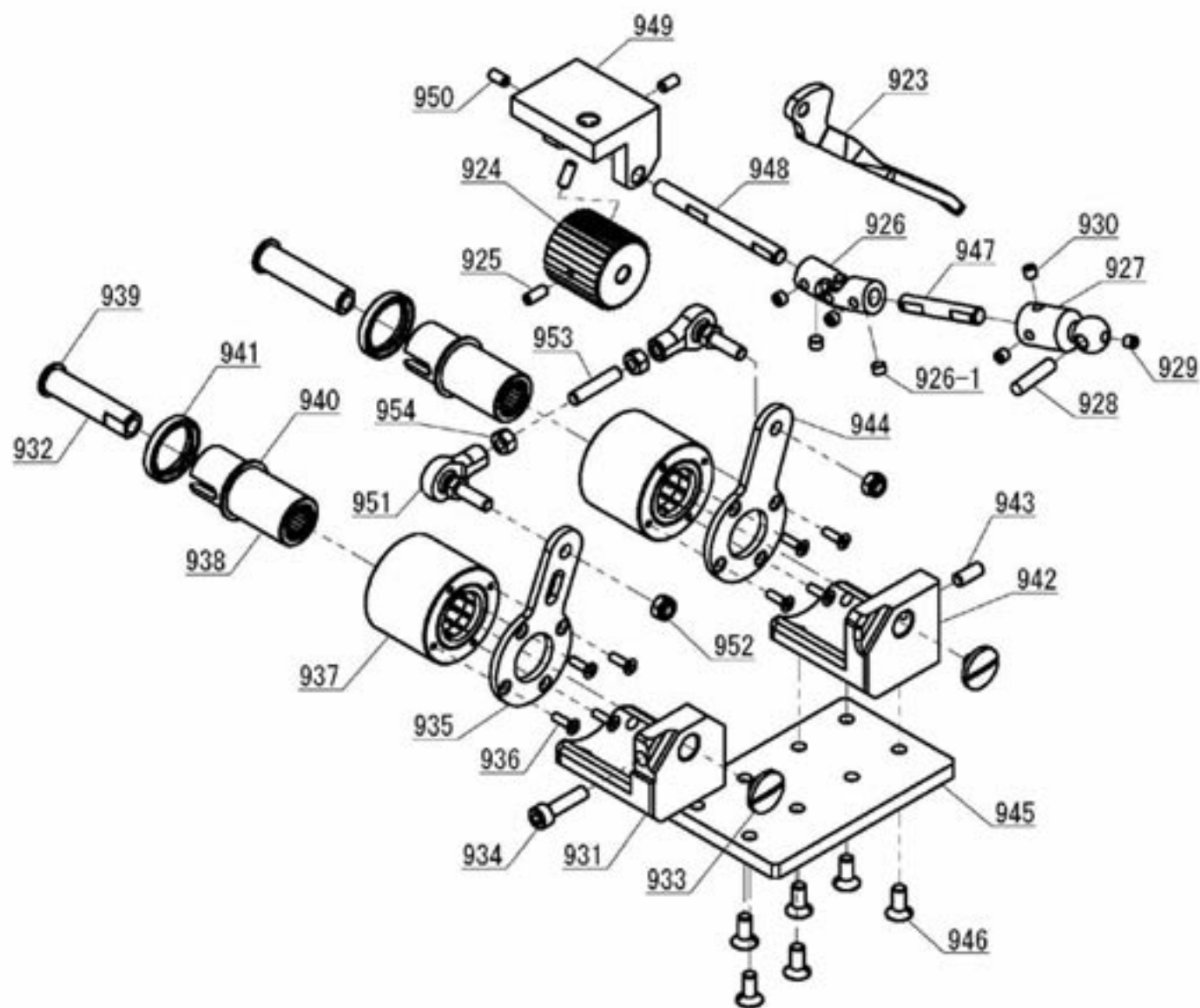
NO.	Name of parts	Qty	NO.	Name of parts	Qty
701	MOTOR	1	724	SCREW(- HEAD)	2
702	MOTOR BRACKET	1	725	SCREW(- HEAD)	4
703	LARGE GEAR	1	726	SCREW(SET)	1
704	LARGE GEAR SHAFT	1	727	NUT	1
705	WASHER(PLAIN)	1	728	LED LIGHT	1
706	NUT	1	729	LUMP SOCKET	1
707	SCREW(CAP)	2	730	LED BRACKET	1
708	WASHER(PLAIN)	2	731	SCREW(+ - HEAD)	2
709	WASHER(SPRING)	2	732	SCREW(CROSS HEAD)	2
710	SMALL GEAR	1	733	SWITCH	1
711	SCREW(SET)	1	734	SPRING PIN(3*25)	1
712	CONNECTOR CABLE	1	735	CORD CLAMP(NK-8N)	1
713	BUSH	1	738	SCREW(+ - HEAD)	1
714	PLATE	1	737	POWER SUPPLY	1
715	SCREW(+ - HEAD)	1	738	POWER SUPPLY BRACKET	1
716	CLOSED-END CONNECTOR	2	739	SCREW(- HEAD)	2
717	CLOSED-END CONNECTOR	2	740	WASHER(PLAIN)	2
718	CORD CLAMP(NK-8N)	1	741	CASTER A ASM.	1
719	SCREW(+ - HEAD)	1	742	CASTER B ASM.	1
720	SWITCH HANDLE	1	743	CASTER C ASM.	1
721	SWITCH COVER	1	744	SCREW(CAP)	2
722	SWITCHE	1	745	WASHER(PLAIN)	2
722-1	INSULATION SHEET	1	746	SCREW(CAP)	2
723	SCREW(- HEAD)	2			



NO.	Name of parts	Qty			
801	OILER ASM.	1			
802	TWEEZERS	1			
803	ACCESSORY BOX	1			
804	NEEDLE(5 PIECES)	1			
805	SPANNER	1			
806	HEXAGONAL WRENCH (2MM)	1			
807	HEXAGONAL WRENCH (2.5MM)	1			
808	HEXAGONAL WRENCH (3MM)	1			
809	HEXAGONAL WRENCH (4MM)	1			
810	SCREWDRIVER-LARGE	1			
811	SCREWDRIVER-SMALL	1			



NO.	Name of parts	Qty	NO.	Name of parts	Qty
901	TOP PLATE ASM.	1	911	PRESSER BAR GUIDE BRACKET	1
901-1	SPRING PIN(5*18)	3	912	SCREW(- HEAD)	1
902	FACE PLATE ASM.	1	913	HAND LIFTER B	1
902-1	RETAINING STUD	1	914	HAND LIFTER PIN	1
903	HINGE PIN	1	915	SCREW(SET)	1
904	ROLLER BASE ASM.	1	916	PRESSER BAR	1
905	SCREW(CAP)	2	917	LOWER ROLLER	1
906	WASHER(PLAIN)	2	918	LOWER ROLLER SHAFT	1
907	PRESSER SPRING	1	919	LOWER ROLLER PLATE	1
908	PRESSER REGULATOR	1	920	SCREW(- HEAD)	2
909	PRESSER LIFTER LEVER	1	921	DUST COVER	1
910	SCREW(- HEAD)	1	922	SCREW(+/- HEAD)	1



NO.	Name of parts	Qty	NO.	Name of parts	Qty
923	HAND LIFTER A	1	939	RETAINING RING S	2
924	ROLLER	1	940	RETAINING RING S	2
925	SCREW(SET)	2	941	OIL SEAL	2
926	JOINT ASM.	1	942	CLUTCH HOLDER	1
926-1	SCREW	4	943	SCREW(SET)	1
927	CLUTCH SHAFT CONNECTOR	1	944	CONNECTING CRANK	1
928	JOINT PIN	1	945	CLUTCH HOLDER BASE	1
929	SCREW(SET)	1	946	SCREW(CAP)	6
930	SCREW(SET)	2	947	CONNECTING SHAFT	1
931	CLUTCH HOLDER	1	948	ROLLER SHAFT	1
932	CLUTCH SHAFT	2	949	ROLLER BRACKET	1
933	SCREW(- HEAD)	2	950	SCREW(SET)	2
934	SCREW(CAP)	1	951	L-BALL	2
935	CLUTCH CONNECTING CRANK	1	952	NYLON NUT	2
936	SCREW(CROSS HEAD)	8	953	ROD	1
937	CLUTCH BASE ASM.	2	954	NUT	2
938	JOINT SHAFT ASM.	2			